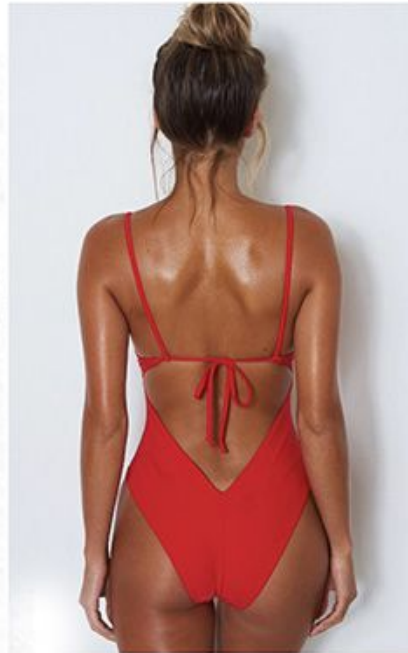
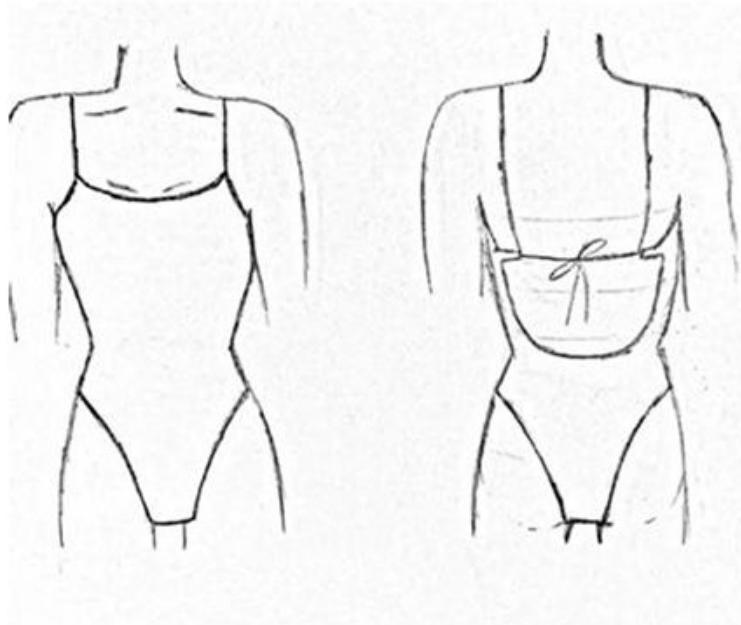


EXAMPLE 1 SWIMWEAR HANDOVER

The simplest way to hand over.
Images taken from internet,
copy & paste with sketches to explain
changes what you're seeking



DETAILS:
No padding
High cut leg
Removable "belt"

STYLE:

No padding
Adjustable shoulder straps
Bowtie on the back
Rounded cut out on the back
High Cut Bottoms

FABRIC:

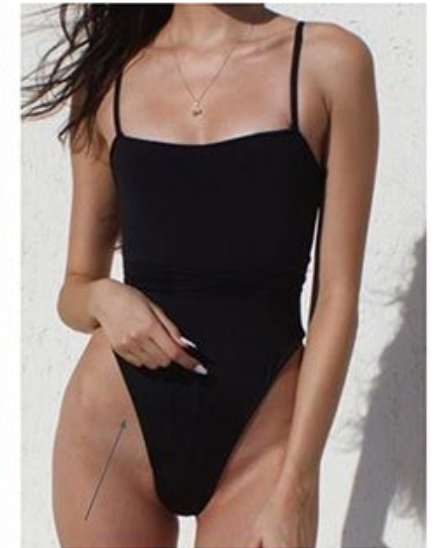
Vita Recycled by Carvico
Or
Brighton Corduroy

COLOURS:

5DXX Nero Corduroy
00SY Bianco



Scooped neck,
ribbed trim and
ribbed strap

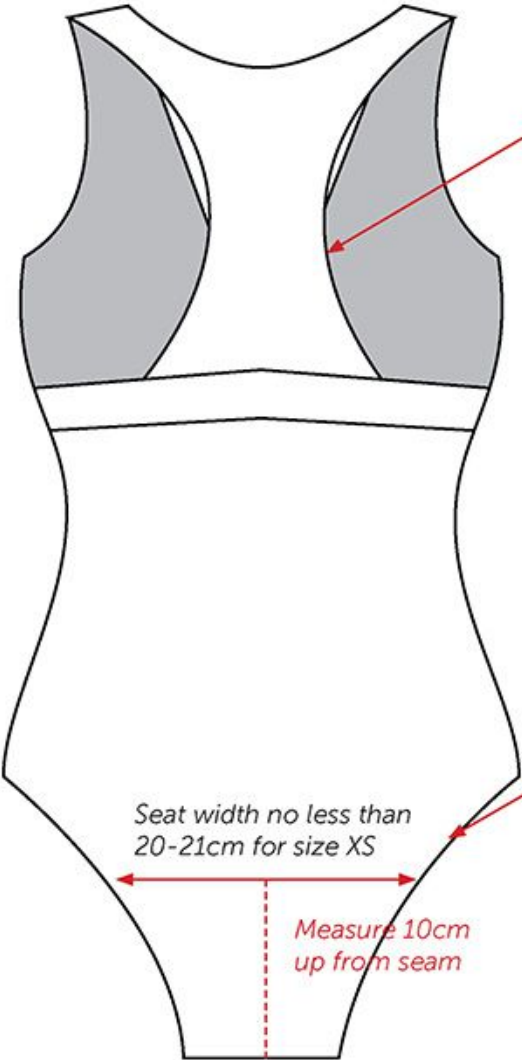


High cut leg

EXAMPLE 2 SWIMWEAR HANDOVER

Simple copy paste images,
with tech pack style drawing

V-FRONT ONE PIECE - BACK



Racer back



Medium bum coverage (NOT cheeky)



EXAMPLE 3 SWIMWEAR HANDOVER

Technical drawings with sizes mentioned

BRAND:		DESIGNER:		DESCRIPTION: WOMENS SWIMWEAR		
SEASON: N/A		DATE: 2018/10/19		MAIN FABRIC:		
STYLE NAME: CROP STRING BIKINI		STYLE #: 1002		SIZE RANGE & [SAMPLE SIZE]: XS [S] M L XL		
FRONT				BACK		
#	OPERATION	STITCHES	WIDTH	SPI	SEAMS	S/A
A	TOP SIDE SEAMS, SLEEVE SS, ARMHOLES,	514 - 2 NEEDLE 4 THREAD OVEREDGE	N/A	16 +/- 1	SSa 1.01 GENERAL SEAM	1/4"
B	BIKINI WAIST, LEG OPENING	504 - 3 THREAD OVEREDGE & 304 - ZIG ZAG	1/4 & 1/8"	10 +/- 1	EFf 7.24.02 HEM & INSERT ELASTIC	3/8"
C	NECKLINE, TOP SWEEP HEM	504 & 406 - 2 NEEDLE BOTTOM COVERSTITCH	1/8 & 1/8"	14 +/- 1	GENERAL SEAM & TOPSTITCH	1/4"
D	SLEEVE OPENING HEM	406 - 2 NEEDLE BOTTOM COVERSTITCH	1/8"	14 +/- 1	EFa Inv. 6.02.07 2-NEEDLE HEM	1/2"
E	BIKINI STRAPS	406 - 2 NEEDLE BOTTOM COVERSTITCH	1/8"	14 +/- 1	EFh BELT LOOPS	1/8"
F						
G						
H						

EXAMPLE 4 SWIMWEAR HANDOVER

Photos taken from real samples showing the changes to be made



STYLE CODE: CTW18
STYLE: CROP TOPS

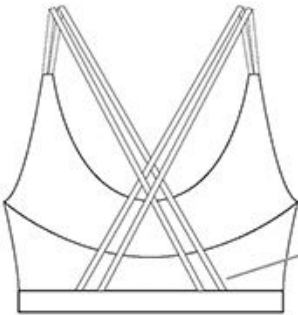
FABRIC: RPET POLY/SPANDEX, 230GSM
SIZES: XS-XL

PG 3
26/2/18

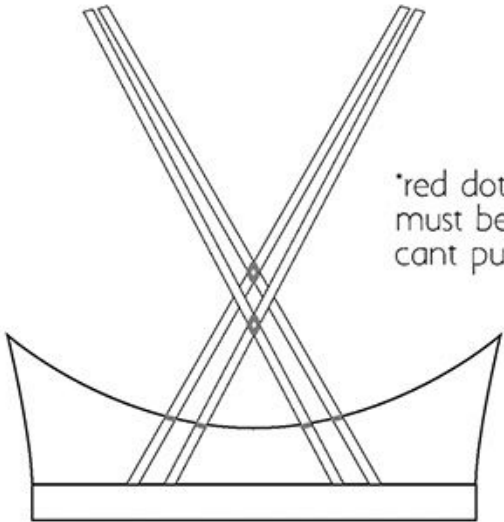
DETAILS



CURRENT SAMPLE PULLS AT STRAPS WHERE THEY ARE SEWN IN

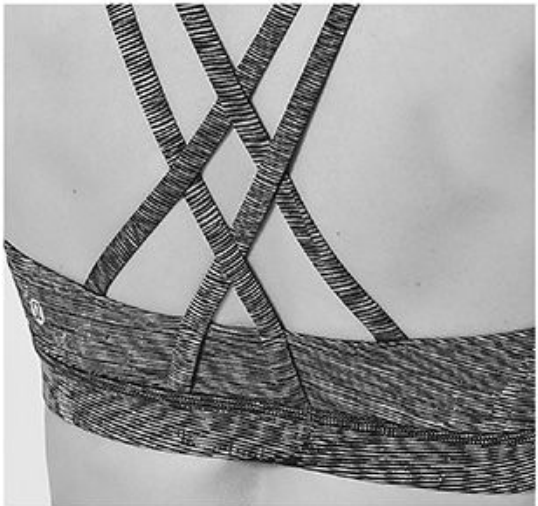


CHANGE STRAPS TO EXTEND TO BOTTOM ELASTIC BAND, ARE STITCHED DOWN



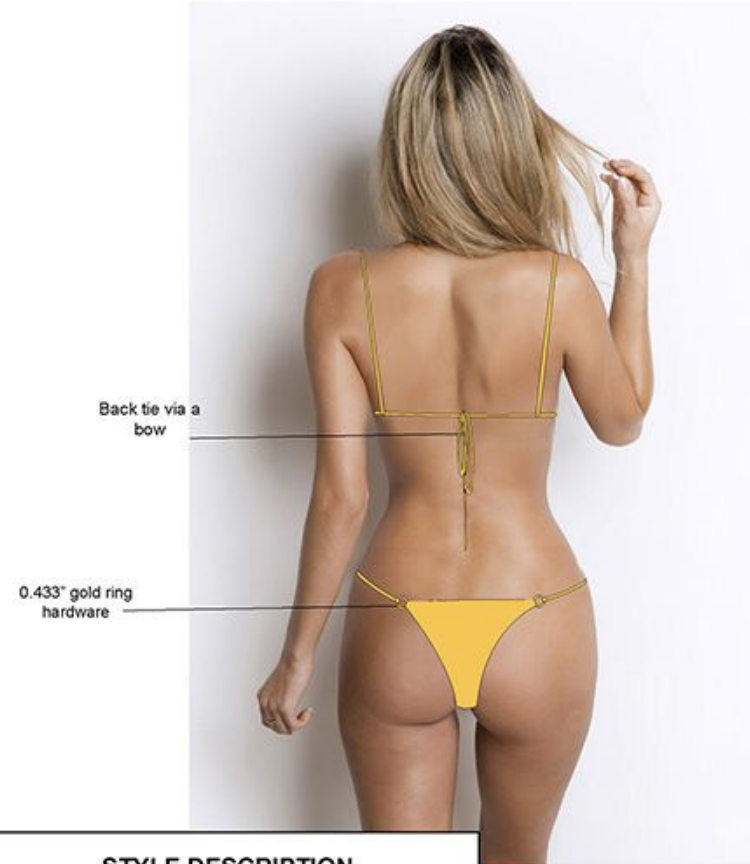
*red dots are bartack stitching, must be very strong so cant pull apart

SIMILAR STYLE



EXAMPLE 5 SWIMWEAR HANDOVER

Easy to follow hand over
front & back images with notes.



BRAND NAME
IF ONLY SWIM

SEASON
AUS 2018 SUMMER

FABRIC
VITA RECYCLED BY CARVICO
or
BRIGHT XTRA LIFE LYCRA BY
CARVICO
(awaiting costs from Carvico team)

STYLE DESCRIPTION
STRAIGHT TRIANGLE RING RUCHED
TOP WITH SINGLE STRING RING
BOTTOM

STYLE CODE
"RAVELLO"

COLOURS (TBC)
1. Custom Light Mustard (Pantone 13-0756
Lemon Zest or equivalent)
2. 60154 Stargate
3. 2136 Vitamina
4. Custom Light Green (Pantone 13-5907
Gossamer Green)

