



RESORT 2024-2025

# INTIMATES GUIDE



# TABLE OF CONTENTS

Introduction

---

Step 1 - Custom or Ready Designs?

---

Step 2 - Selecting Lace

---

Step 3 - Available Colors

---

Step 4 - Handover Your Collection

---

Fitting & Sizing

---

Contact Us

---

## ADDING SEXY INTIMATES

Whether adding lace intimates to your current collection or creating an entirely new line of sexy intimates, you only need to consider the type of Lace you love and the colours you want to use. We offer some stunning colours: black, snow White, Ocean Blue, Green Forest, Ruby Red, Mint Blue, and Rhubarb.

Our catalogue contains the styles you can select to work with. Add the styles or sets you love, and we can assemble them in your choice of Lace and colour. With our wholesale prices in the region of 30 USD a set, it's easy to see you can expect an amazing return in the region of 400% ROI. As lace intimates blend perfectly with bikini sets, it's not hard to see that your brand could be elevated to new heights, bringing in new clients and more income.

Why not try one set to start & see how you go from there? With the fabrics on the floor ready to cut, these could easily be added to any bulk PO or sample request. If sales start to pump, you can easily add more.

Whatever you want—one set or many, or a mix of Lace and swimwear—we're here to bring your collection to life.

By choosing to work with us, you join a legacy of over 30 years of producing bespoke collections for hundreds of high-end independents globally and some of the world's top high street names, such as Alice McCall, David Jones & Myers in AUS, Harrods & Selfridges in the UK, Free People, Urban Outfitters, and more in the US you can be sure of the quality.

We're genuinely excited to hear about the visions and ideas. Adding some sexy lace intimates offers many advantages to almost all swimwear brands. Please read through this guide as your first step into the world of Lace and the possibilities it offers. There's much more to explore, but for now, if you're ready, let's begin!



# STEP 1

## CUSTOM OR READY DESIGNS?

The first thing to handle will be the styles you want us to produce. These can be your own inspiration, some of our ready-to-order ones, or a combination of both.

### Custom Designs

We can only produce lace styles similar to the ones we offer. This is due to Lace being imported in 100m lots per colour. If you're just starting out in Lace, it's best to select our designs or request them with minor edits. We require a tech pack for custom lace designs with as many images as possible and notes on how you want your designs assembled.

### Ready To Order Designs

Our 2024 [lace collection](#) is an ensemble of edited and reworked designs from some of the world's premium-quality clothing brands. All have been patterned and graded to international [body sizes](#) and are retail-ready.

### Mix & Match

Combine your own custom designs with some of our ready designs by emailing the codes from our collection and adding your custom designs' tech packs, noting any desired changes or additional information.

Note.

You can select our designs exactly as they are or request minor edits with detailed drawings or tech packs. We do not accept complex lace designs that vary considerably from our collection.



# STEP 2 SELECTING LACE

## Our Lace Selection: A Fabric for Every Vision

There are five different types of Lace, available in pre-dyed plain colours. Select from Lace Vintage, Lace Bouquet, Lace Clematis, Lace Climbing Rose, and Lace Polka Dot.

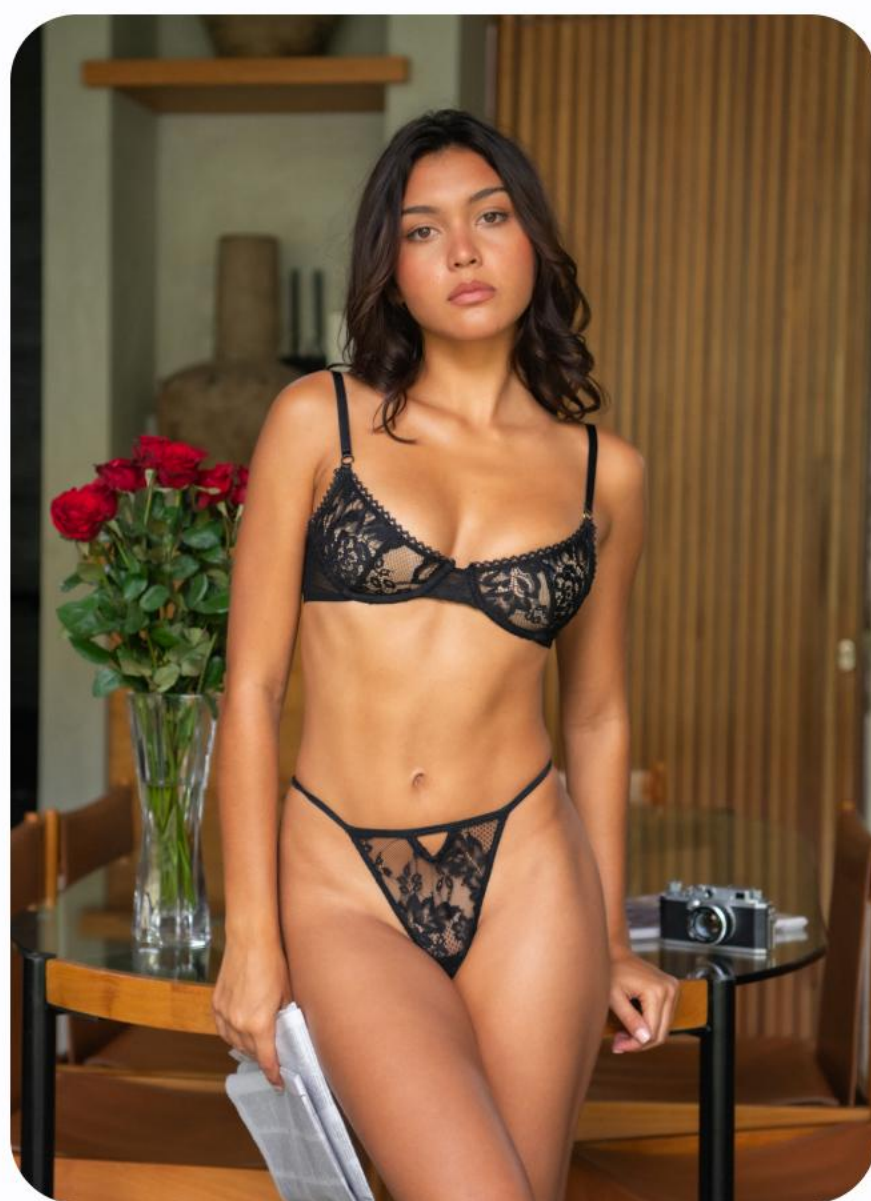


## Starter & Fabric Swatch Packs \*Coming Soon\*

Need help deciding which fabric to choose? Don't worry; we know that when it comes to luxury fabrics, seeing is believing—and feeling is even better. That's why we are offering Lace Starter and Fabric Swatch Packs. To learn about lace quality and textures, purchase a fully inclusive pack delivered to your door via DHL.

Note. These packs will be ready next week. Send us an [email](#), and we'll get straight back to you when they're ready.

## Example Prices



### BOUDOIR BLISS SET

Lace Climbing Rose

Top: \$16.50 | Bottom: \$12.40



### INTIMATE ELEGANCE SET

Lace Climbing Rose

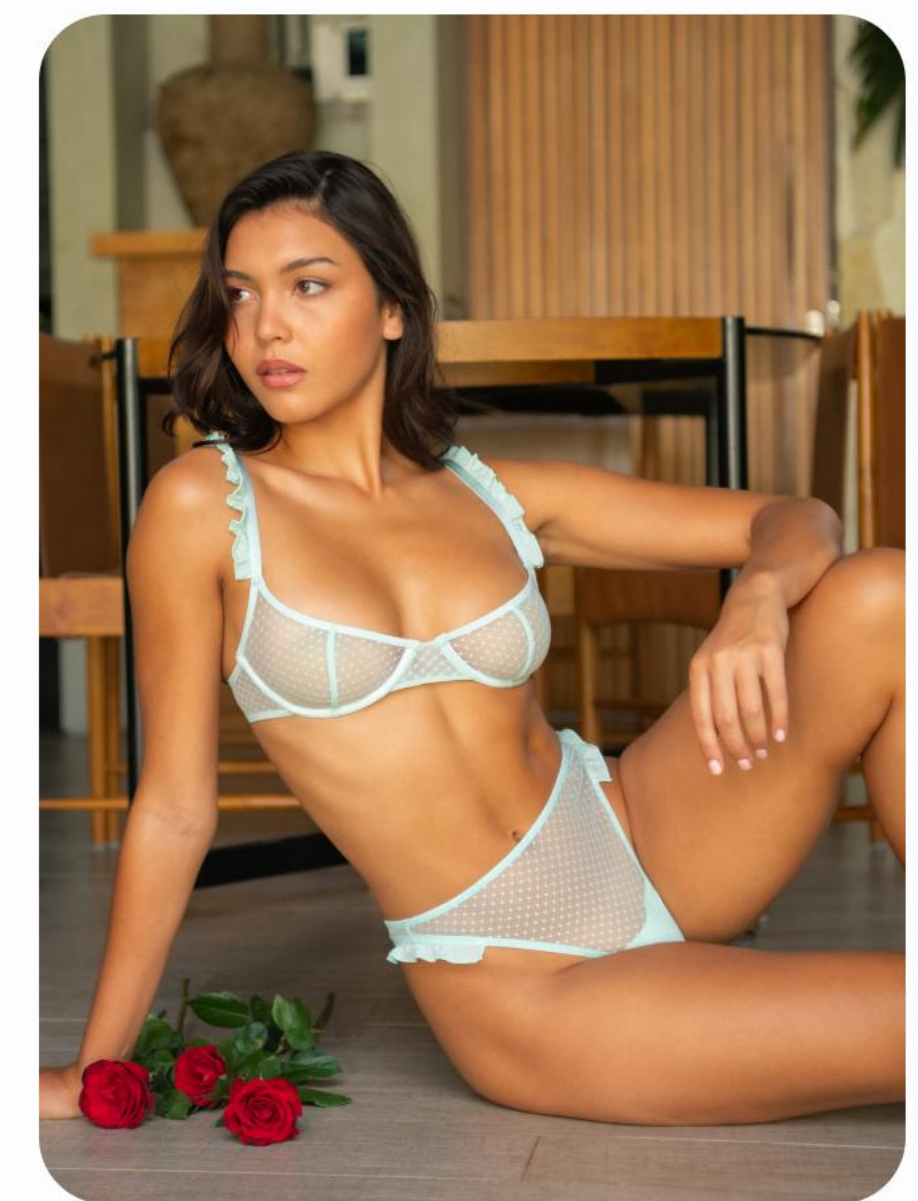
Top: \$13.90 | Bottom: \$14.40



### MIDNIGHT WHISPERS SET

Lace Polka Dot

Top: \$14.99 | Bottom: \$11.90



### LACE ALLURE SET

Lace Polka Dot

Top: \$14.99 | Bottom: \$11.40

# STEP 3

## AVAILABLE COLORS

### Stock Colours

Every Lace comes in Black, Snow White, Ocean Blue, Green Forest, Ruby Red, Mint Blue, and Rhubarb.

Ready to cut on demand. Select the styles and colours you love, & you are ready to place a sample order. All styles have been patterned and graded to international body sizes; you can skip sampling as long as you check our [international body size guide](#).



### Custom Colours

We can dye on request. The MOQ is 100m per colour, with a surcharge of USD 100 per colour. Since 100 meters will produce, on average, 400 articles of 200 seats, this is a small cost to create your own custom colour.

Custom colours must be sent as a Pantone TPX reference.



1. Select your colours and send us the Pantone Link.
2. It's advisable to order lab dips to ensure the colours are as you expected.
3. MOQ 100m per custom colour. Always best to request each print as a lab dip to ensure the colour meets your expectations.

Note.

- As 400 articles in one colour, mixed across the collection, can be too much for start-up brands, it is advisable to test the market with our pre-dyed colours.
- When requesting custom colours, best to pay the USD 25 per colour lab dip fee to ensure the colours are as expected.

[Request Lab Dips](#)

# STEP 4

## HANDOVER TO COSTING

### Ordering Samples

Requesting lace samples is now more cost-effective and straightforward than ever. Follow our simple steps to price your designs and get answers to any questions.

- 1. Select your Designs:** Choose from custom designs, our ready-to-order collection, or a combination of both.
- 2. Choosing Lace Types, & Colors:** From delicate Chantilly to bold guipure, we have the perfect lace for every design. Lace is available in seven stock colours or can be ordered in custom shades using Pantone as a reference in 100m rolls.
- 3. Handover your Collection:** Send us your design specifications, and we'll provide you with the best estimate for premium-quality lace intimates within 2-3 working days.

### Notes.

- MOQ. For stand-alone collections, 200 pieces in as many styles as you like, 25 per style, 3 per size, and colour.
- Mix & match some lace with your swimwear. 100 pcs per order, 25 per style & 3 pieces per size & colour.



# FITTING & SIZE GUIDE

## Size Guide

We use international body sizes and state-of-the-art digital patterning software to ensure perfect fits. For the best results, we recommend professional fittings.

Please [check our size](#) guide before placing an order.

## Fitting - Top Tip

Silk should always be fitted before dispatching samples. You may arrange this yourself, or we suggest contacting [Castaway Model Agency](#), which offers a fitting service for 90 USD.

Select the model you think best represents your brand, and contact us to arrange. During the fitting, your sample merchant will be on hand to assist with the model and offer comments on how each article fits and feels.

Any edits are then quickly organized before samples are dispatched.

We credit back 50% of the fitting fees upon receiving a bulk PO.





## Ready to elevate your brand?

It's simple and cost-effective. Download our Lace Guide or [Lace Catalog](#) to start.

If you have any questions or want to discuss this further, please don't hesitate to contact us. You can reach us by email, WhatsApp, or via a callback. We find that callbacks often see brand owners getting started into sampling faster than with back-and-forth communications.

[Book a Free Consultation Now!](#)

### Get In Touch

#### Free Call-Back

Speak directly to a lace specialist,  
saving time in communications

#### WhatsApp

For a Speedy reply  
We will reply ASAP

#### Email

For larger files & handovers  
attach to an email.

#### Factory Tour

Come & visit our fully AC facilities,  
sampling studio & QC room.



SWIMWEARBALI.COM



VISIT OUR  
WEBSITE